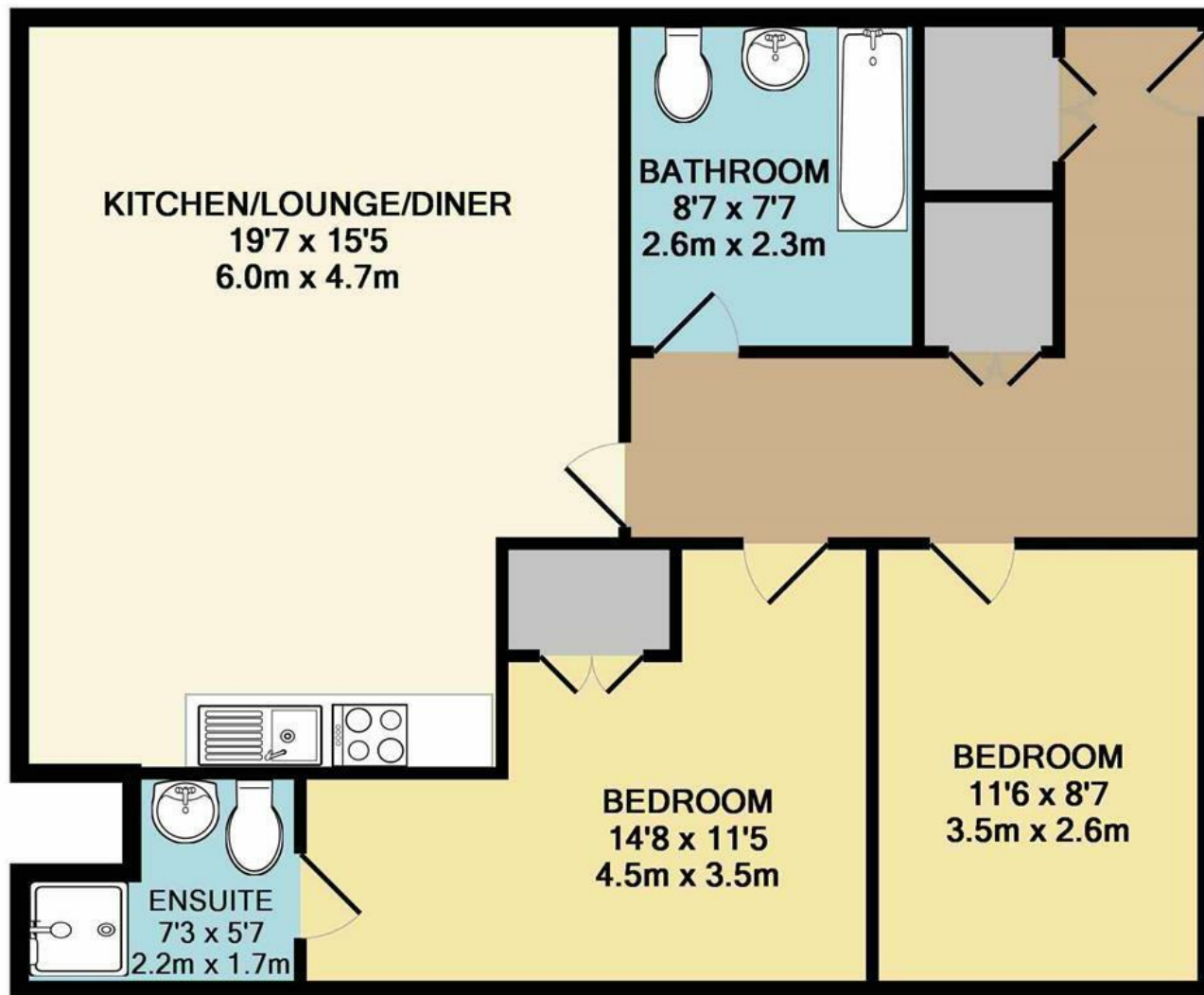




Maidstone Road | Norwich | NR1  
 Guide Price £165,000

abbotFox



Energy Efficiency Rating		
	Current	Potential
Very energy efficient - lower running costs		
(92 plus) <b>A</b>		
(81-91) <b>B</b>		
(69-80) <b>C</b>	70	72
(55-68) <b>D</b>		
(39-54) <b>E</b>		
(21-38) <b>F</b>		
(1-20) <b>G</b>		
Not energy efficient - higher running costs		
<b>England &amp; Wales</b>	EU Directive 2002/91/EC	

Disclaimer – In accordance with the Property Misdescriptions Act, the company gives notice that all descriptions, references to condition, necessary permissions for use and other details are given in good faith and believed to be correct, but any intending lessees do not rely on them as statements of fact, but must satisfy themselves by inspection or other means, as to their accuracy.

TOTAL APPROX. FLOOR AREA 755 SQ.FT. (70.2 SQ.M.)

Whilst every attempt has been made to ensure the accuracy of the floor plan contained here, measurements of doors, windows, rooms and any other items are approximate and no responsibility is taken for any error, omission, or mis-statement. This plan is for illustrative purposes only and should be used as such by any prospective purchaser. The services, systems and appliances shown have not been tested and no guarantee as to their operability or efficiency can be given  
 Made with Metropix ©2018

The logo for abbotFox, featuring the word 'abbot' in white and 'Fox' in orange, set against a dark blue square background.

abbotFox presents this investment opportunity, situated in the centre of Norwich. With tenants currently in situ, this two bedroom, modern ground floor apartment will provide an instant income for any investment buyer.

Tax Band - B

A two bedroom apartment set in the much sought after Maidstone Road development within walking distance of the city centre with its wide range of high street shops, shopping malls, pubs, popular restaurants and the historical Norman castle and cathedral.